

25/00875/FUL

Former Police Station, Grove Street, Redditch
B98 8DB

Construction of a purpose-built Innovation Centre
(Class E) building with associated facilities and
landscaping

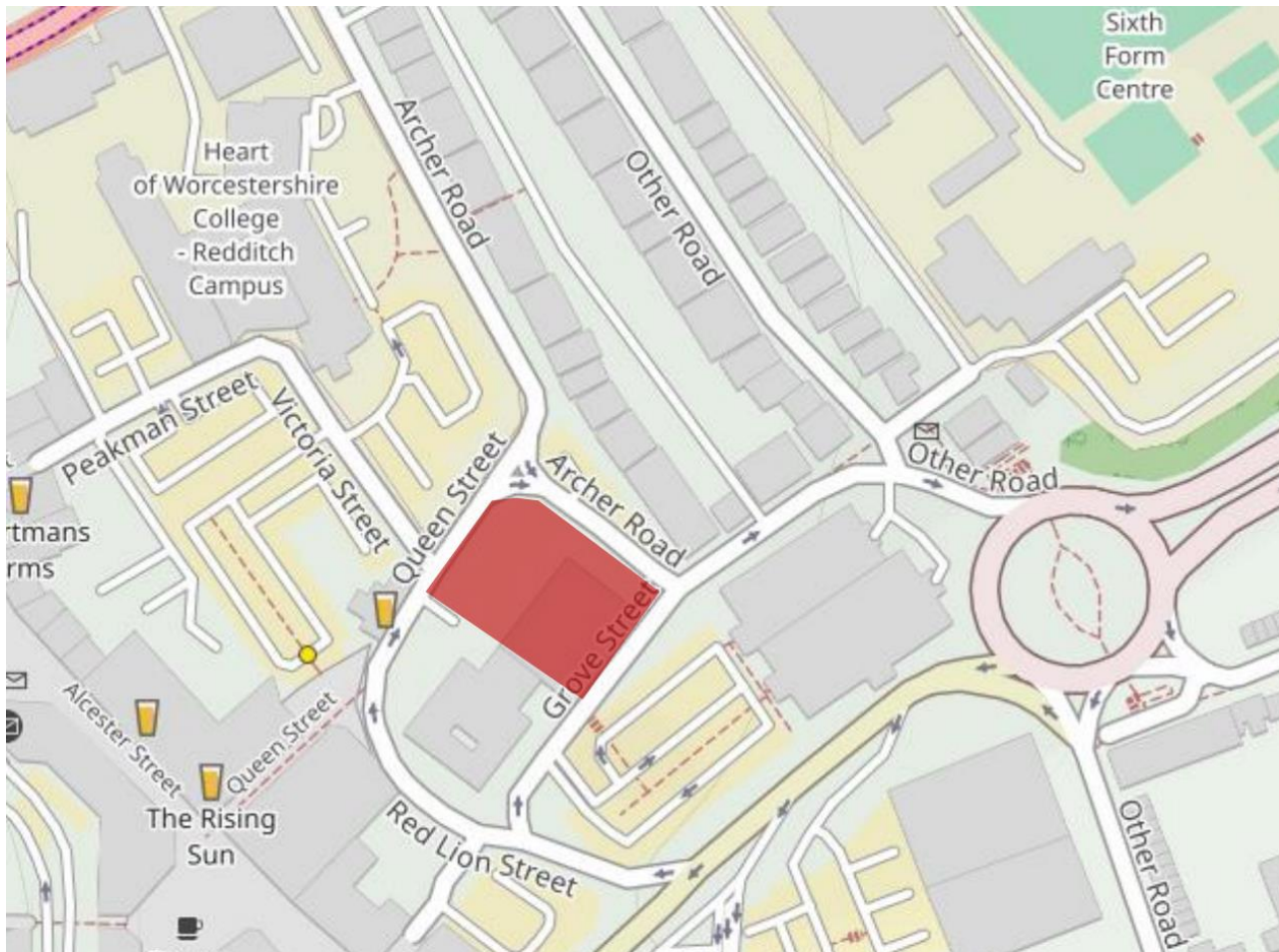
Recommendation: grant subject to conditions

Site Location

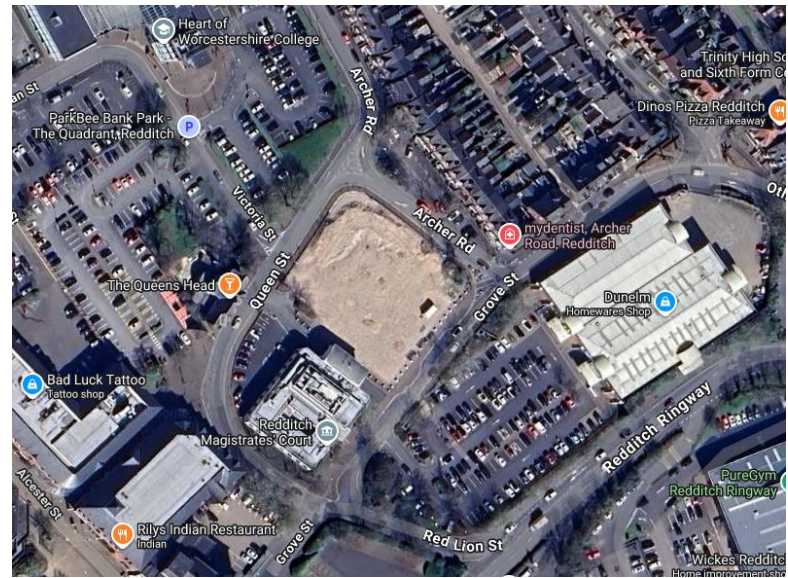


Application Site

Site showing one-way arrangement



Site prior to and post demolition of Police Station



Former Police Station viewed from Archer Rd



Proximity of (former) Police Station to the existing Magistrates Court (August 2021)



Site from Queen Street



Existing vehicular access off Queen Street indicated by
arrow to be closed



Site from Grove Street



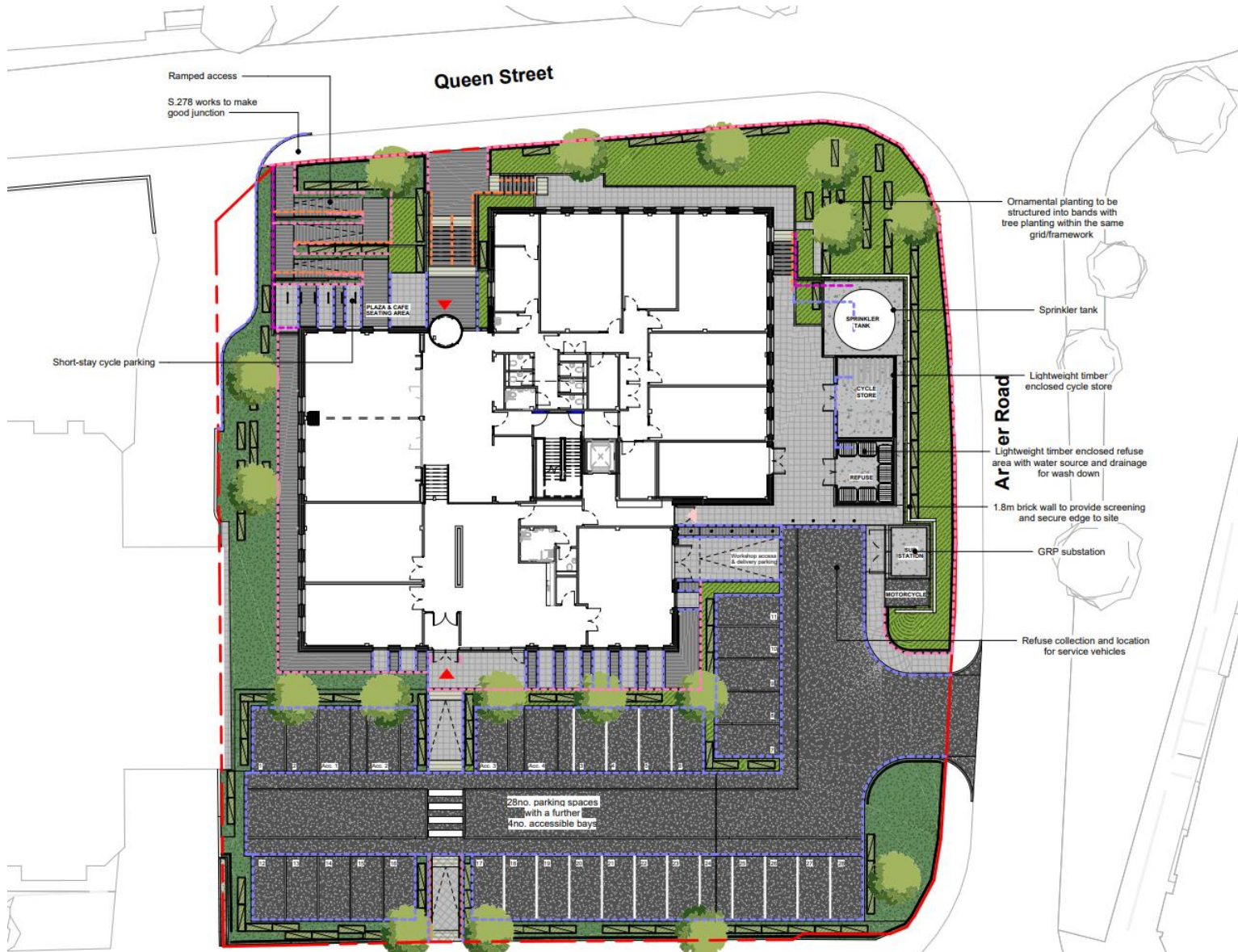
Location of (former) Police Station within the site



Proposed Site Plan



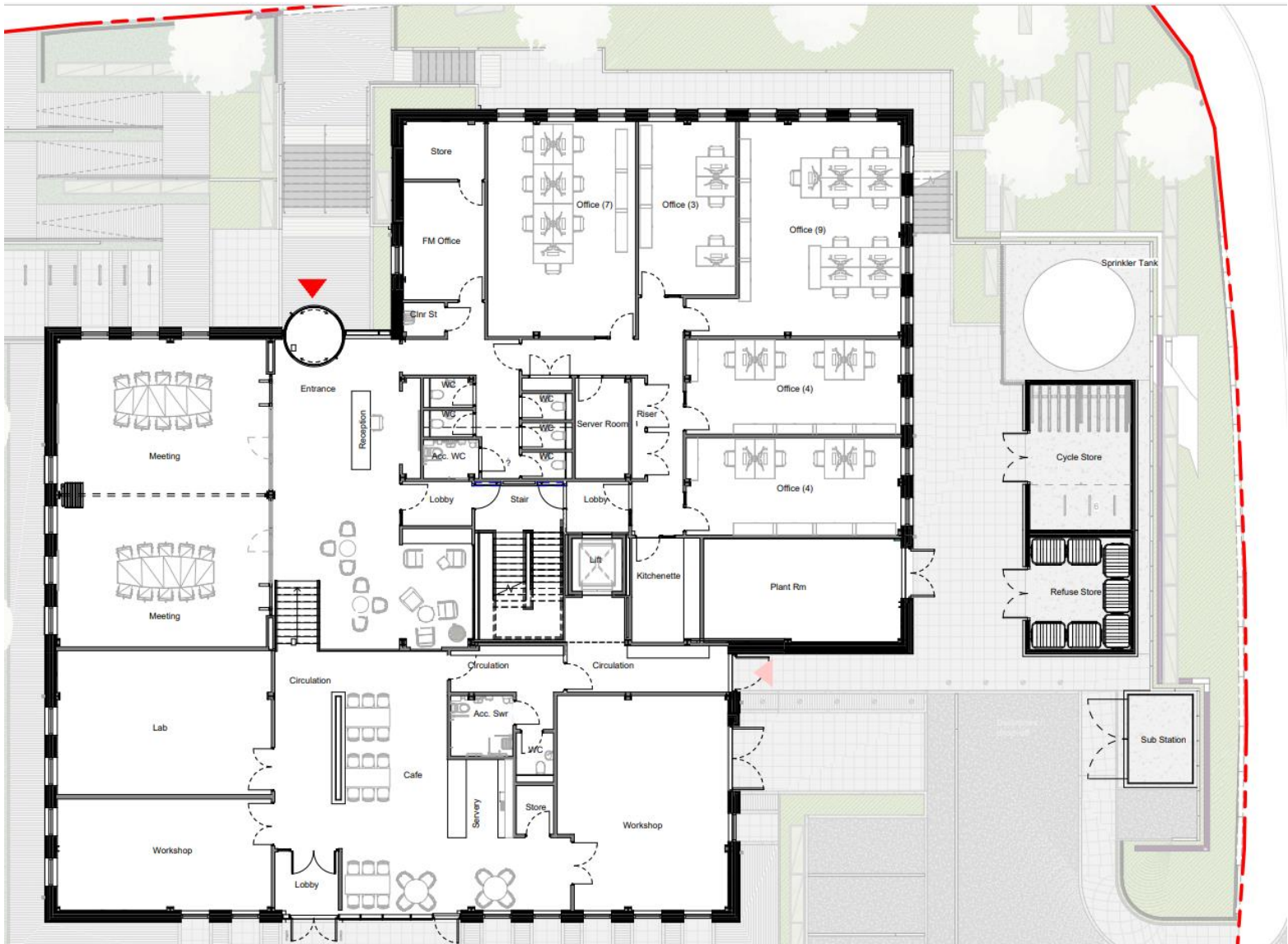
General Arrangement Plan



Proposed Landscaping



Ground floor plan



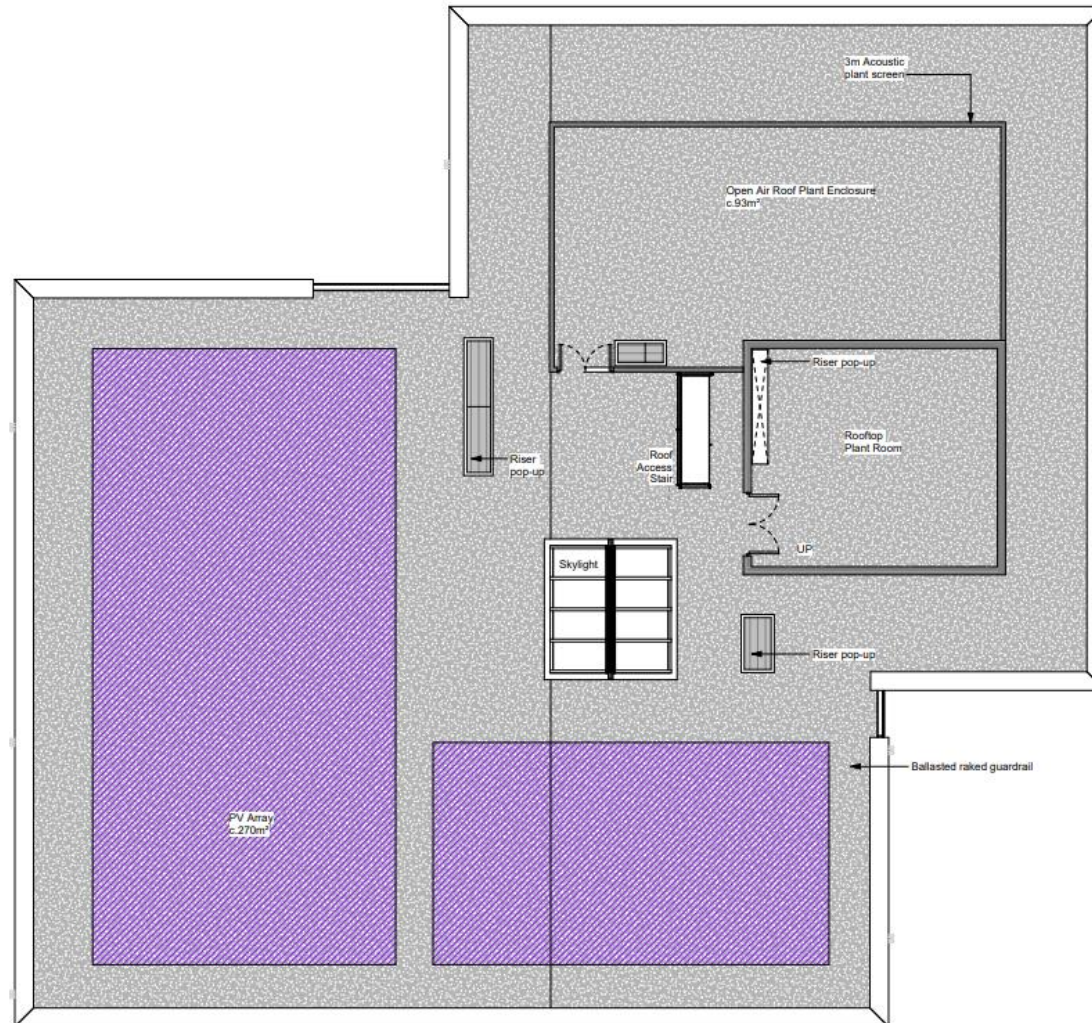
First floor plan



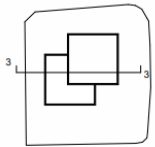
Second floor plan



Roof Plan



Sections



Elevation: from Grove Street



Elevation 1 - GA Planning

Elevation: from Magistrates Court



Elevation 2 - GA Planning

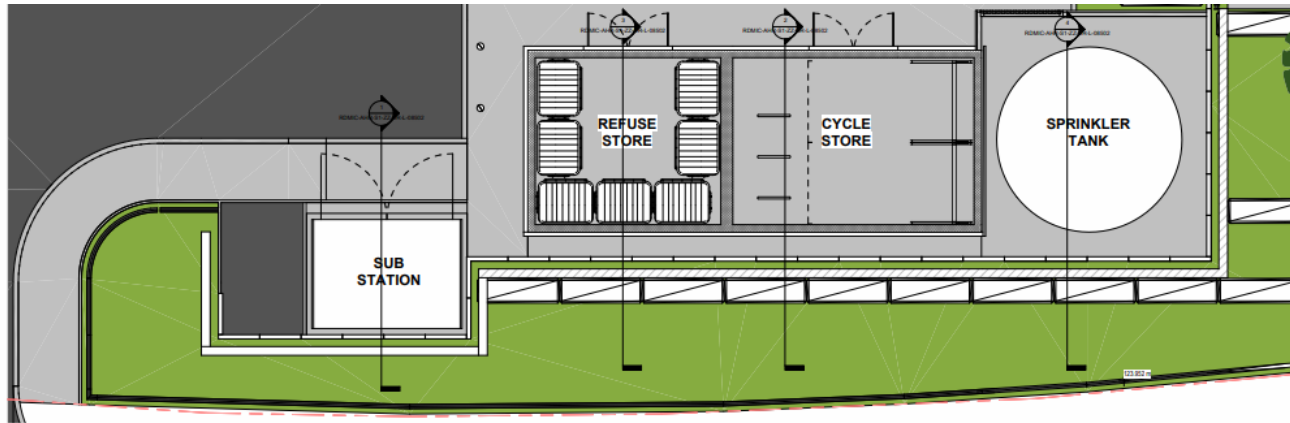
Elevation: from Queen Street



Elevation: from Archer Road

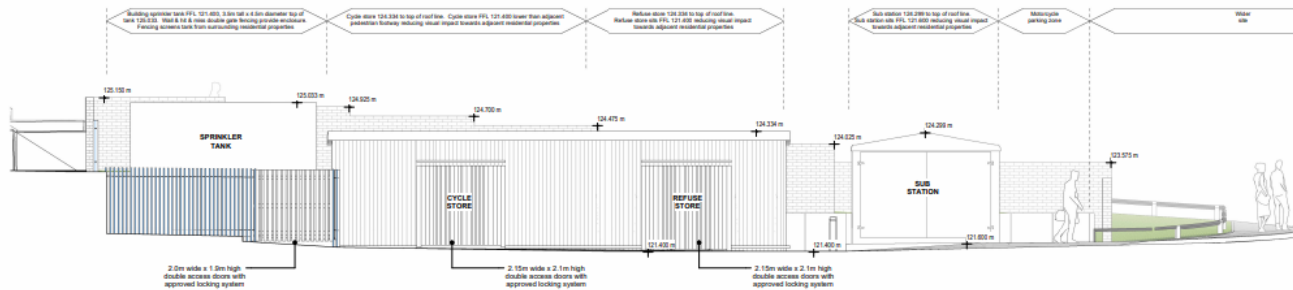


Refuse, cycle store, Sub Station & Sprinkler Tank



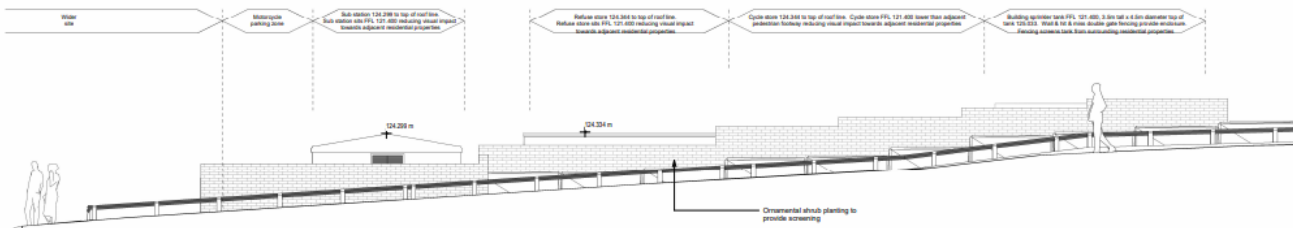
1 Refuse, Cycle Store, Sub Station & Sprinkler Tank - Ground Floor Plan

1:50



2 Refuse, Cycle Store, Sub Station & Sprinkler Tank - Front Elevation

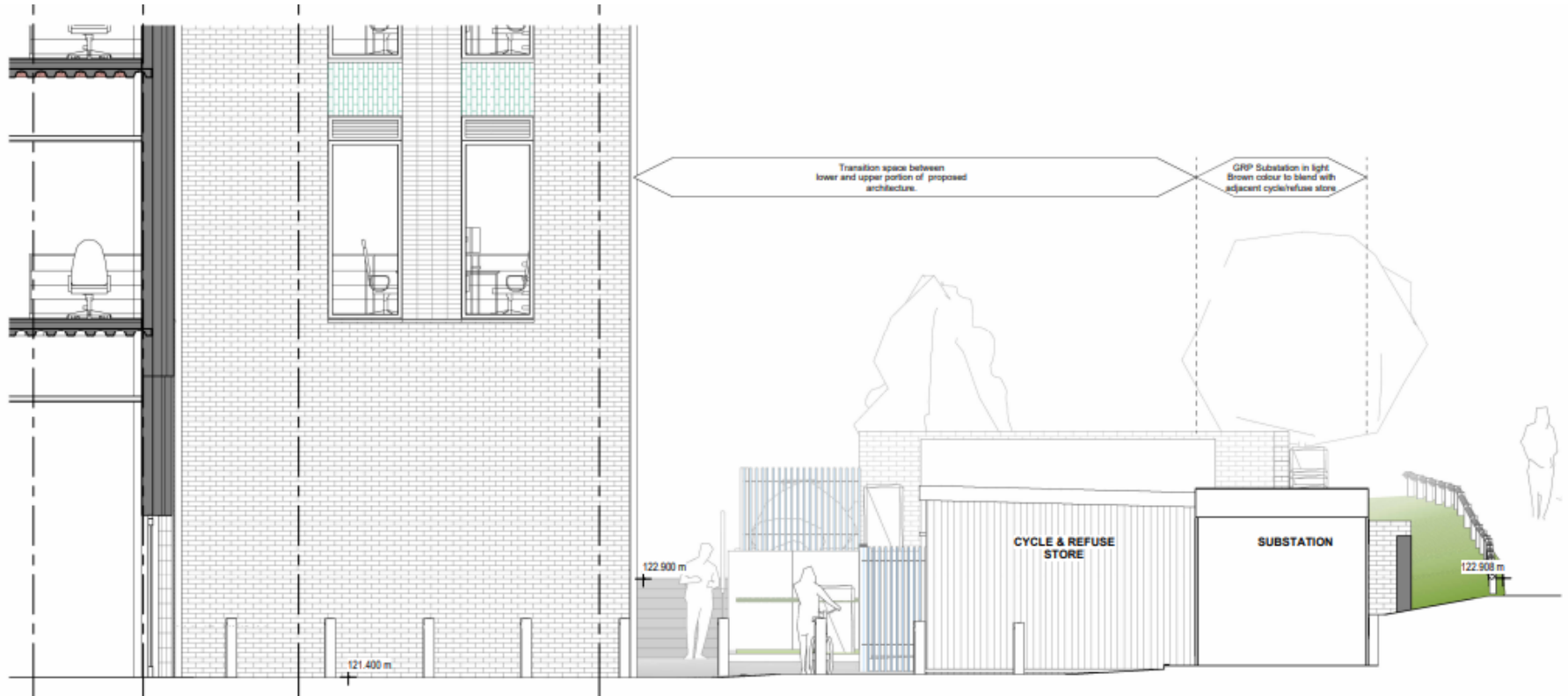
1:50



3 Refuse, Cycle Store, Sub Station & Sprinkler Tank - Rear Elevation Copy 1

1:50

Refuse, cycle store, Sub Station elevation



View along Archer Road



Approach view from Grove Street towards the Innovation Centre



View from Grove Street



View from Victoria Street looking across to main entrance



View from Victoria Street looking across to the main entrance

Main entrance view from Queen Street



View towards the entrance facing Grove Street



Anticipated internal images

